

CM0264

2x4 DVI-HD Audio/Video Matrix KVMP™ Switch

Control Two DVI Computers and Two HD Computers/Devices from One Dual Display Console

- The CM0264 2x4 DVI-HD Audio/Video Matrix KVMP™ Switch's Dual Display Console supports one DVI display and one HD display, allowing users to access 4 computers/devices from a single console, consisting of USB keyboard, USB mouse, HD display, and DVI display. As a USB hub, it permits each computer to access connected peripherals on a one-computer-at-a-time basis.

With its unique design and innovative features, the CubiQ™ CM0264 2x4 DVI-HD Audio/Video Matrix KVMP™ Switch provides both style and functionality for the SOHO environment. Allowing you to switch seamlessly between two HD - and two DVI-enabled PCs, and share USB peripherals and high-definition audio from a single dual-display console, the CM0264 is ideal for multimedia applications, and offers the ultimate in space-saving, streamlined KVM technology for the desktop.




Features

- One Dual Display USB console independently and simultaneously controls two DVI computers, two HD computers or devices, and two additional USB devices
- Dual Display – simultaneously control one computer on one display and view another source on the other display
- Graphical User Interface (GUI) for convenient, user-friendly operation
- Innovative desktop control features include on-screen file transfer and copy-paste functionality, and cursor shift function in dual display mode
- 2-port USB 2.0 hub built in; fully compliant with USB 2.0 specification
- Independent switching of KVM, USB peripheral, and audio focus
- Computer selection via front panel pushbuttons, hotkeys, and GUI
- HDMI compatible; HDCP compatible
- Dolby True HD and DTS HD Master Audio support
- Superior video quality – up to 1920 x 1200 (DVI Single Link), 1080p (HDMI)
- Supports widescreen resolutions
- Multiplatform support – Windows, Linux, and Mac
- **Cursor Shift Function** – in dual-display mode, the mouse cursor can move back and forth across both displays, shifting the KVM focus
- **Video DynaSync™** – Exclusive ATEN technology eliminates boot-up display problems and optimizes resolution when switching between ports
- Power on detection – if one of the computers is powered off, the CM0264 automatically switches to the next powered-on computer
- **Console keyboard port emulation/bypass feature supports most gaming/ multimedia keyboards**
- Complete keyboard emulation for error-free booting
- Mac keyboard support and emulation*
- Auto Scan Mode for monitoring all computers and HDMI devices
- Firmware Upgradable
- * 1. PC keyboard combinations emulate Mac keyboards.
2. Mac keyboards only work with their own computers



CM0264

2x4 DVI-HD Audio/Video Matrix KVM™ Switch

Control Two DVI Computers and Two HD Computers/Devices from One Dual Display Console

Patented cursor shift function in dual display mode



Cursor Shift Function – when you are using two displays, the mouse cursor can move back and forth across the displays, shifting the KVM focus.

Dual Display Console



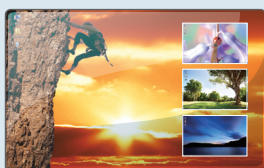
Switch between four high-definition video sources on two displays (one DVI, one HD)

File Management



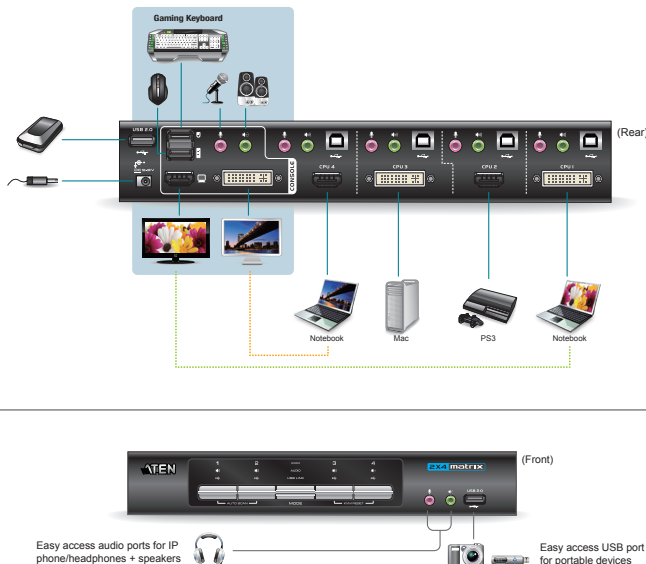
Intuitive GUI provides easy monitoring, file transfer, copy and paste and other innovative desktop control features

Picture-in-picture (PIP) 3n1 view mode



Allows you to monitor up to four computers simultaneously. Idea for desktop multimedia applications

View and control 4 computers on either of 2 displays



Specification

Function		CM0264
Computer Connections		4
Port Selection		Front Panel Pushbuttons; Hotkeys; GUI
Console Ports	Keyboard	1 x USB Type A Female (Black; rear panel)
	Video 1	1 x DVI-I Female (White)
	Video 2	1 x HD Female (Black)
	Mouse	1 x USB Type A Female (Black; rear panel)
	Speaker	2 x Mini Stereo Jack Female (Green; 1 x front, 1 x rear)
	Mic.	2 x Mini Stereo Jack Female (Pink; 1 x front, 1 x rear)
Connectors	Keyboard/Mouse	4 x USB Type B Female (White)
	Video	2 x HD Female (Black)
	Speaker	4 x Mini Stereo Jack Female (Green)
	Mic.	4 x Mini Stereo Jack Female (Pink)
	Power	1 x DC Jack
USB 2.0 Hub		2 x USB Type A Female (White; 1 x front panel; 1 x rear panel)
Switches	Selected	5 x Pushbutton
	KVM	5 (Orange/Green)
LEDs	Audio	5 (Green)
	USB	5 (Green)
Emulation		Keyboard / Mouse
Video		1080p (HDMI) / 1920 x 1200 (DVI)
Scan Interval		1-99 secs. (Default: 5 secs)
Power Consumption		DC5.3V, 10W
Environment	Operating Temp.	0-50°C
	Storage Temp.	-20-60°C
	Humidity	0-80% RH, Non-condensing
Physical Properties	Housing	Metal
	Weight	0.86 kg
Dimensions (L x W x H)		26.00 x 7.50 x 4.50 cm

* Product specifications and appearance are subject to change without notice.

